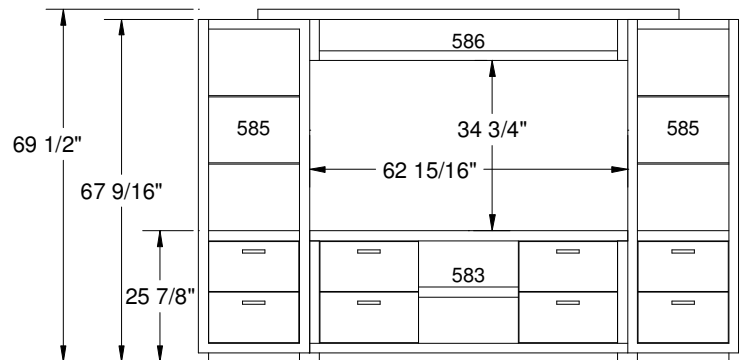


M-Cube Wide Entertainment Wall

Available Finishes:

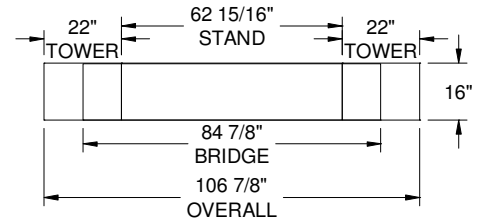
Stand	Tower	Bridge	
# 583 47	# 585 47	# 586 47	Cherry Mist Maple
# 583 27	# 585 27	# 586 27	Autumn Maple
# 583 99	# 585 99	# 586 99	Merlot Maple
# 583 39	# 585 39	# 586 39	Chocolate Maple
# 583 51	# 585 51	# 586 51	Mascara Maple



Design Features:

- **Wood Species:** - Solid 4/4 maple used in frames and mldgs.
- Birch veneer used in top, bottom, sides.
- **Lighting:** - Tower has 1 halogen 20 W puck light.
- **Shelves:** - Tower has 2 adjustable/removable glass shelves.
- Stand has 2 adjustable/removable wood shelves.
- **Joinery:** - Rail and stile jointed frames.
- Recessed backing.
- **Glass:** - 6mm thick polished glass shelves
- **Hardware:** - Handle finish satin nickel.
- Full length piano hinge in towers
- Hidden European hinge in stand.
- **Carton Weight:** - Stand 150 lbs. - Tower 125 lbs.
- Bridge 55 lbs.
- **Carton Volume:** - Stand: 18 cu ft. - Tower: 18 cu ft.
- Bridge: 9 cu ft.
- **Height:** - 69-1/2" from floor to tallest point.
- **Features:** - Fully adjustable shelves, finished top, drawers,
and 1 hidden compartment.
- **Inner Dimensions:**
 - Stand - Centre area: 19-1/2"w x 15-1/2"d x 21-3/8"h
 - Drawer: 17-1/4"w x 13-3/8"d x 7-1/8"h
 - Side: 19-13/16"w x 12-5/16"d x 21-3/8"h
 - Towers - Top area: 20-13/32"w x 14-9/16"d x 41"h
 - Drawer: 16-3/8"w x 13-3/16"d x 7-1/8"h
 - Bridge - Opening: 60-7/8"w x 15-7/8"d x 6-1/8"h

Footprint/Floorplan:



Glass Shelf Size:

